

Browser Check

Info

We added a Registry Entry to detect if eSO is already installed with the Browser (IE). The Standard and the Addon Setup have a unique value, which contain the Versionnumber, which can be helpful in case it's also important to know which version the user has (force Update).

Technical

We are set the Following 2 Registry Entries to support all the IE Versions (tested with IE6,8,9).

HKCU

```
"SOFTWARE\Microsoft\Windows\CurrentVersion\Internet Settings\User Agent\Post Platform"
```

```
"SOFTWARE\Microsoft\Windows\CurrentVersion\Internet Settings\5.0\User Agent\Post Platform"
```

And, on X64 OS, additionally

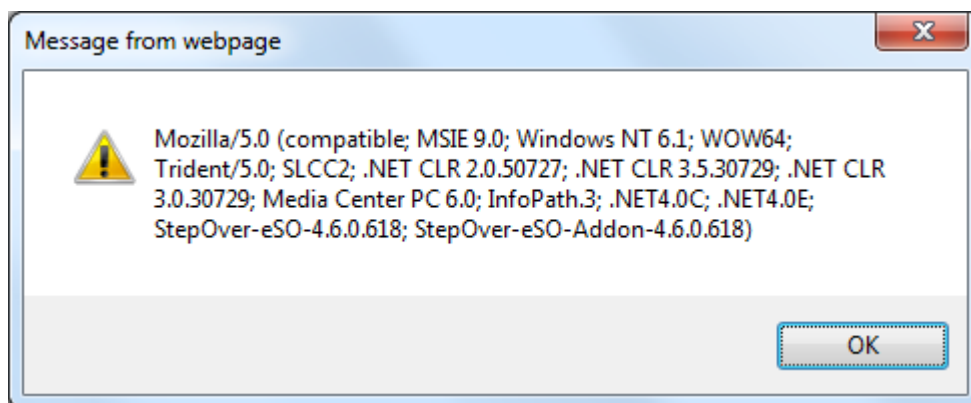
```
"SOFTWARE\WOW6432Node\Microsoft\Windows\CurrentVersion\Internet Settings\5.0\User Agent\Post Platform"
```

Details Information can be found under:

http://msdn.microsoft.com/en-us/library/ms537503%28VS.85%29.aspx#related_topics

The Values can be readed inside the UserAgent:

```
javascript:alert(navigator.userAgent)
```



Note

The IE8 is supporting both Registry Entries, which means the values are twice in the UserAgent