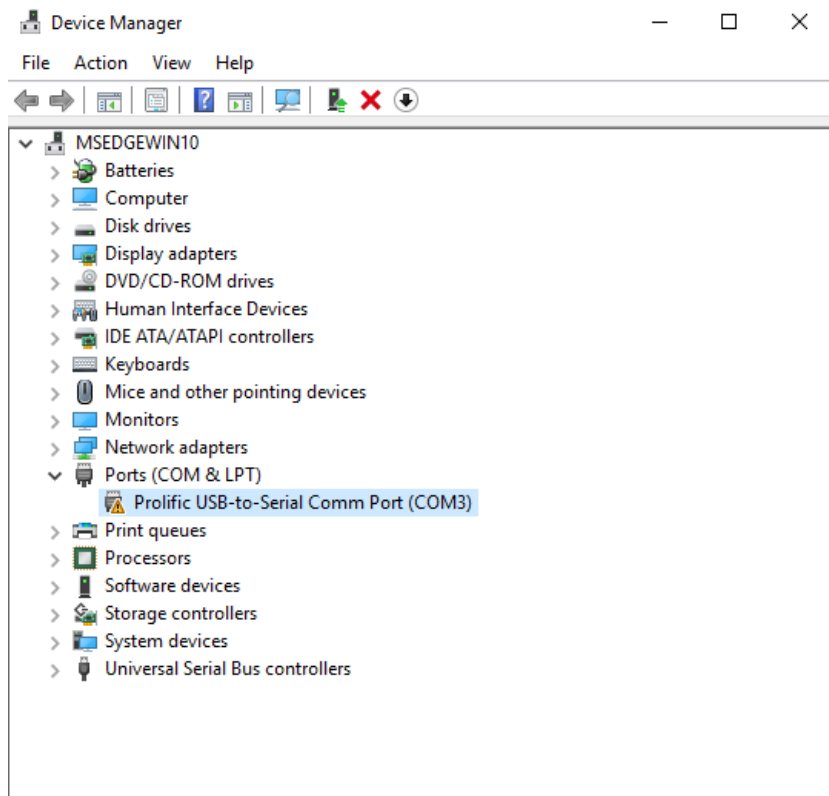


blueMobilePad/plusPad with Windows 8/10

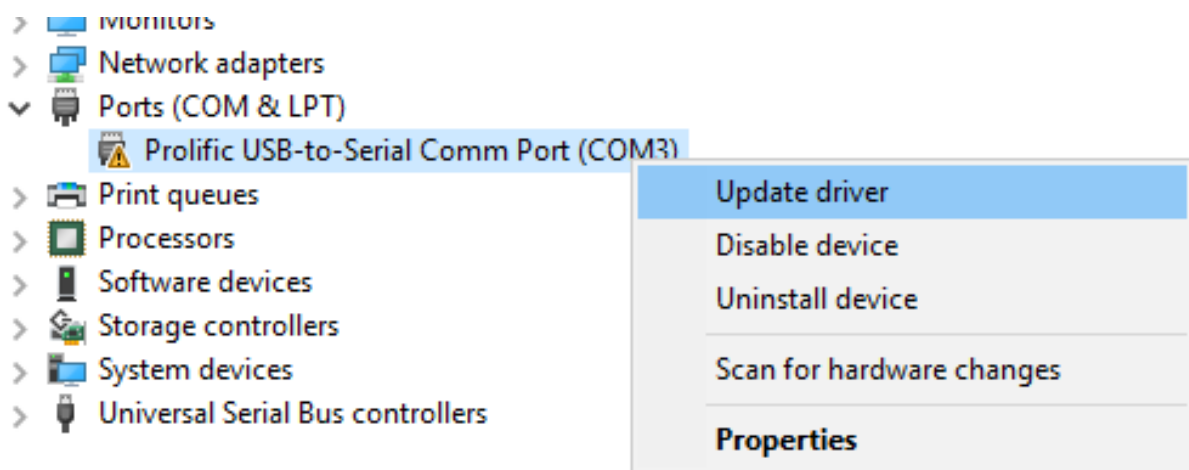
The USB Versions of the old blueMobile and plusPads which are not produced anymore (since 2009), has an intern USB/COM Chip which requires a driver. The new Windows Versions have a Prolific Driver, but unfortunately this driver version is not compatible with the old signature pads. You need to use the old Driver from 2009 which you can download here:

<https://www.stepoverinfo.net/download.php?key=prolific>

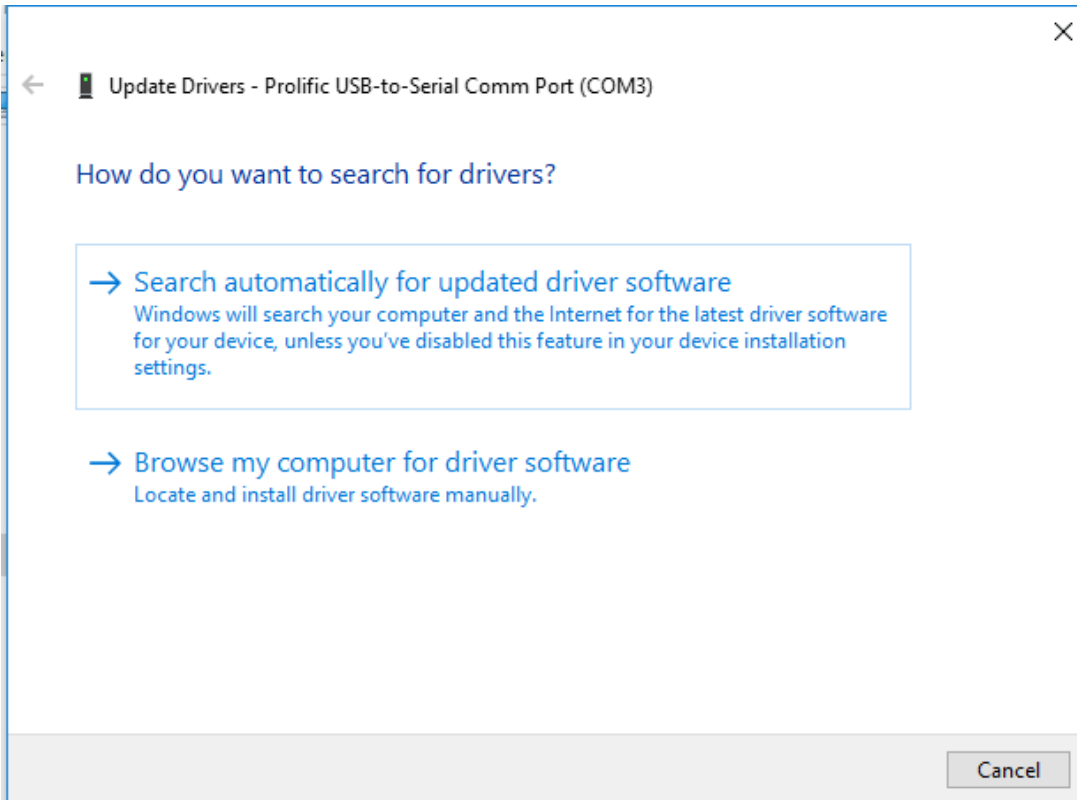
After the installation of the Setup you need to open the Device manager, search for COM and & LPT Devices.



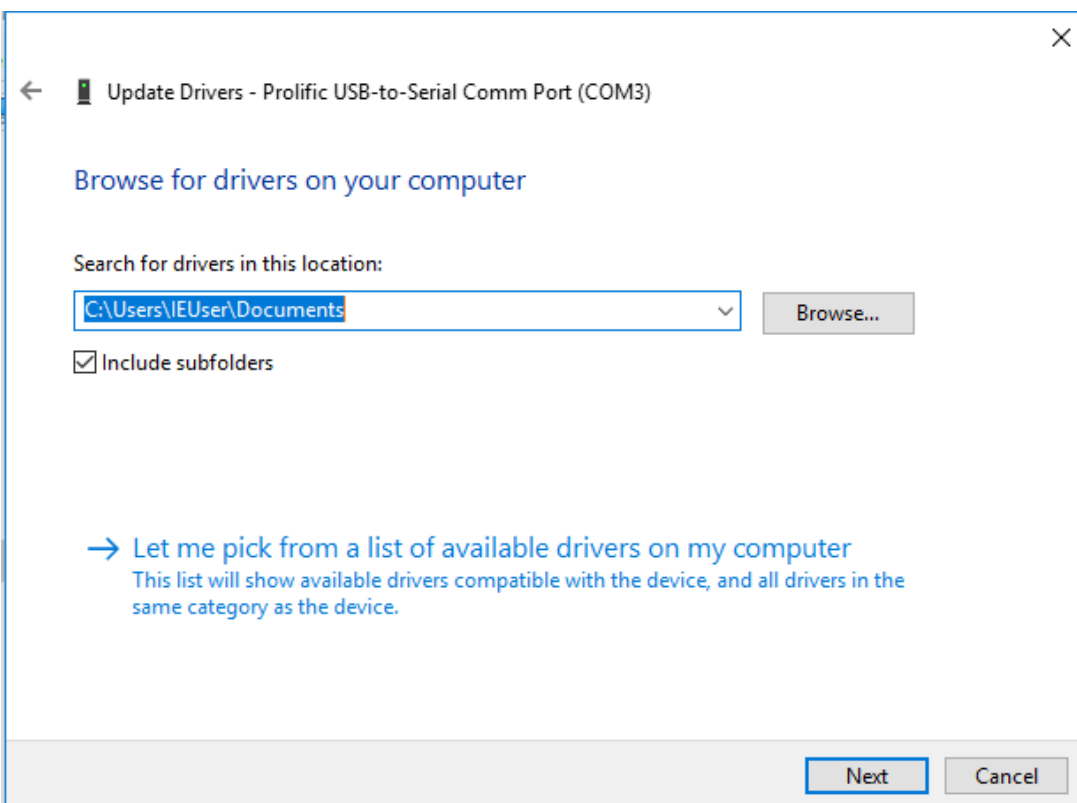
You need to select "Update driver" of the "Prolific USB-to-Serial Comm Port device"



Next you need to click on "Browse my computer for driver software"



Next select the Option "Let me pick a list of available driver on my computer"



You should see at least 2 different driver Versions, you need to select the Version 3.3.5.122 from (17.07.2009)



← Update Drivers - Prolific USB-to-Serial Comm Port (COM3)

Select the device driver you want to install for this hardware.



Select the manufacturer and model of your hardware device and then click Next. If you have a disk that contains the driver you want to install, click Have Disk.

Show compatible hardware

Model

- Prolific USB-to-Serial Comm Port Version: 3.3.5.122 [7/17/2009]
- Prolific USB-to-Serial Comm Port Version: 3.8.12.0 [3/3/2017]

This driver is digitally signed.

[Tell me why driver signing is important](#)

Have Disk...

Next

Cancel

The installation of the device should be successful and the warning icon inside the device manager should be resolved.



← Update Drivers - Prolific USB-to-Serial Comm Port (COM3)

Windows has successfully updated your drivers

Windows has finished installing the drivers for this device:



Prolific USB-to-Serial Comm Port

Close