

eLux Client Installation

If you have a ThinClient with eLux + Citrix/RemoteDesktop you also need our TCP/Citrix Client.

Download:

eLux 4.x

https://www.stepoverinfo.net/download.php?file=sotcpclient-2.2.3-2.UC_RP-1.0.epm

https://www.stepoverinfo.net/download.php?file=sotcpclient-2.2.3-2.UC_RP-1.0.fpm

eLux 5.x

https://www.stepoverinfo.net/download.php?file=sotcpclient-2.2.3-2.UC_RP5-1.0.epm

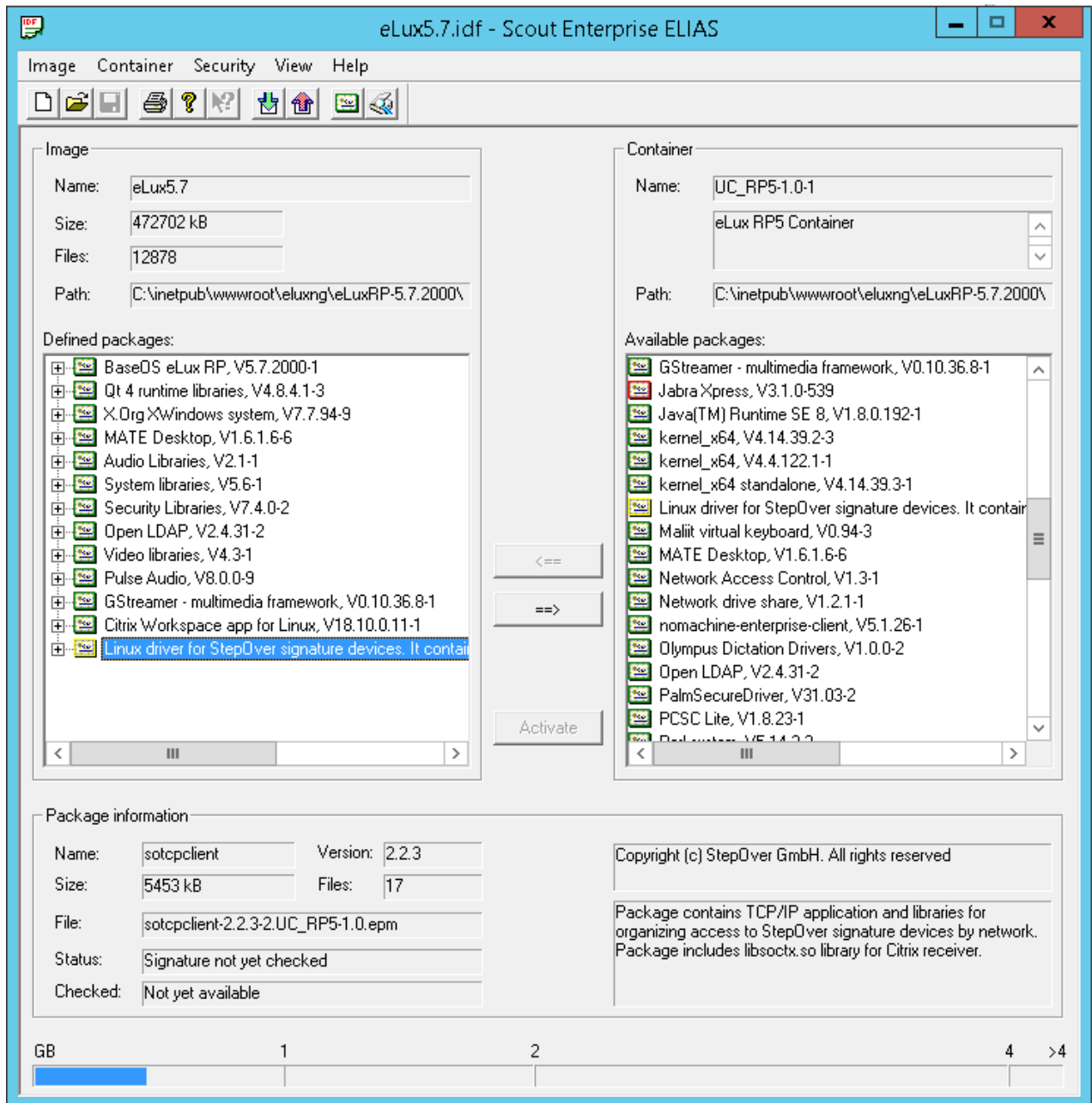
https://www.stepoverinfo.net/download.php?file=sotcpclient-2.2.3-2.UC_RP5-1.0.fpm

eLux 6.x

https://www.stepoverinfo.net/download.php?file=sotcpclient-2.3.3-2.UC_RP6_X64-1.0.zip

Installation for Citrix (no required for TCP Client):

1. Download the Packages and add the package with Elias to your Firmware



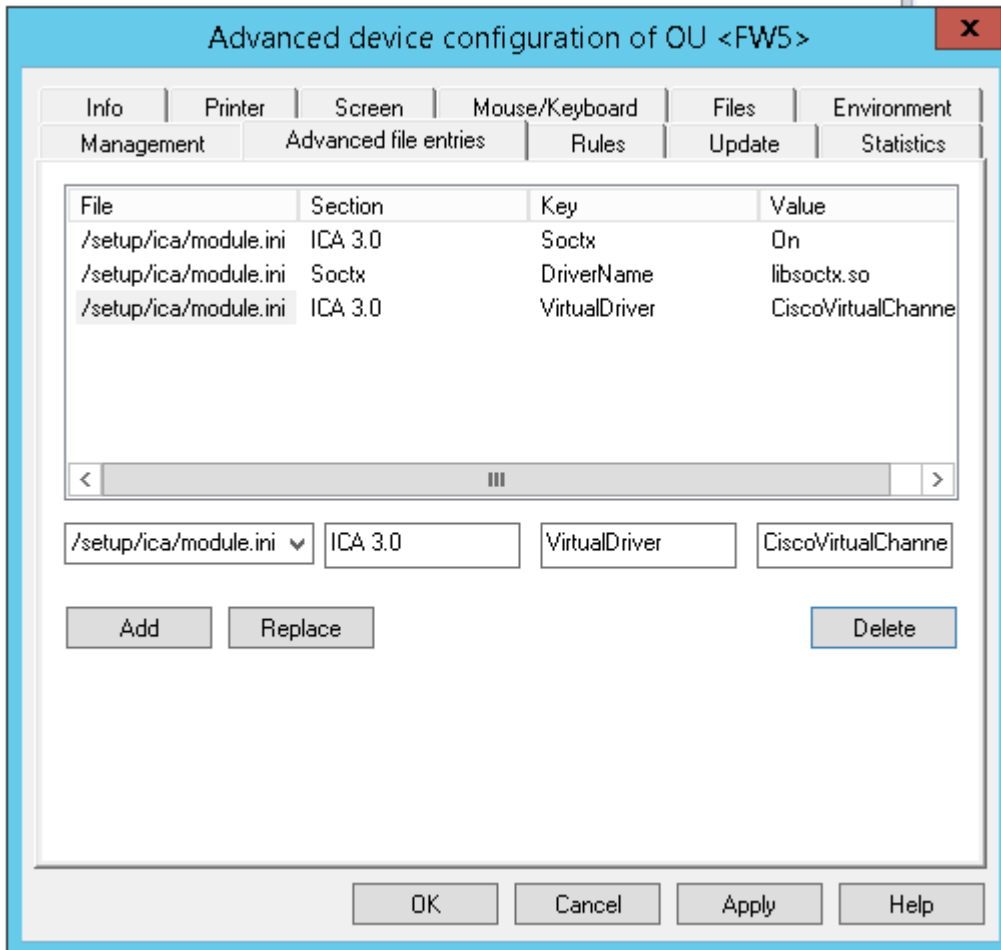
2. In case you want to use the Signature Pad with Citrix you need additional files entry's in the Module.ini

File	Section	Key	Value
/setup/ica/module.ini	ICA 3.0	Soctx	On
/setup/ica/module.ini	Soctx	DriverName	libsotctx.so
/setup/ica/module.ini	ICA 3.0	VirtualDriver	Soctx

You need to add Soctx to the existing VirtualDriver value. You can read the current value with the Device diagnostic by requesting the current config files.

Be sure there are no doubled values inside the module.ini, the GenericUSB will add automatically, therefor ignore this for the Value. If you have problems to open the Citrix session, please check the /opt/Citrix/ICAClient/config/module.ini for doubled values, they need to be removed inside the /setup/ica/module.ini as they will be added automatically.

You can add this the file Entry's inside the Advanced device configuration settings of the scout:



3. You also need to link the package to the Citrix Client after you uploaded the package. The command for that is:

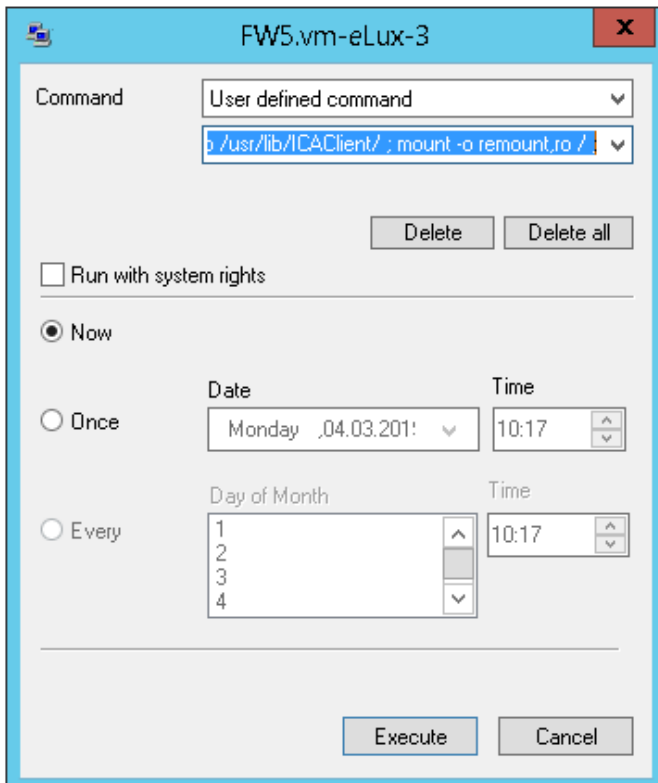
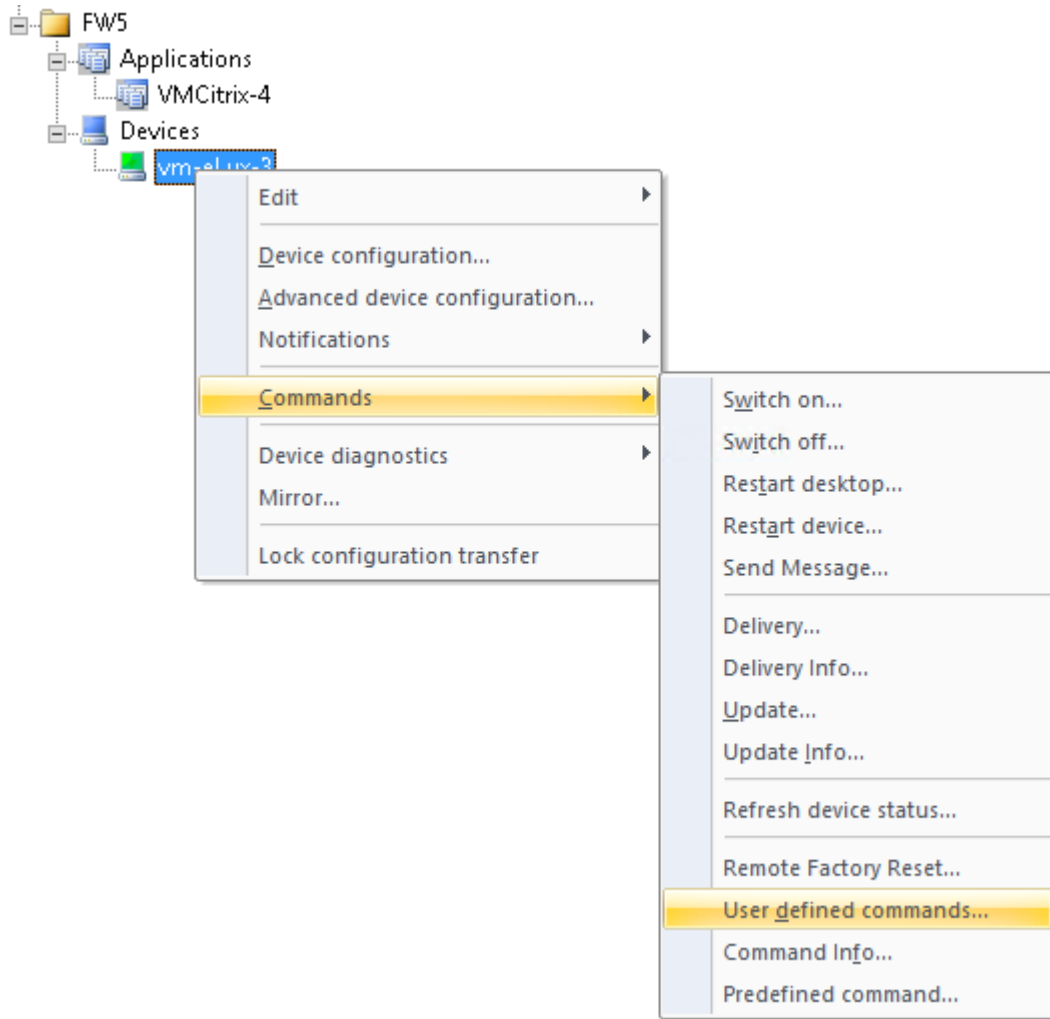
eLux4 /and 5:

```
mount -o remount,rw / ; ln -s /usr/lib/libsoctx.so /usr/lib/ICAClient/ ; mount -o remount,ro / ;
```

eLux6:

```
mount -o remount,rw / ; ln -s /usr/lib/libsoctx.so /opt/Citrix/ICAClient/ ; mount -o remount,ro / ;
```

You can call this command with the scout for a single device or a group.



Please not that you need this call every time you update the Firmware.